

IMAP

INNER MELBOURNE ACTION PLAN

Making
Melbourne
more
liveable



Annual Report 2017–2018



Contents

Comment from the Chairs	1
Introduction	2
The Inner Melbourne Action Plan	2
Achievements 2017-18	3
The Inner Melbourne Action Plan 2016-2017	3
Progress 2017-18	4
Strategy 1.1: Implementation of the Census of Land use and Employment	5
Strategy 1.1: Smart City Solutions	6
Strategy 1.3: IMAP Tourism	8
Strategy 1.4: Protecting people in Crowded Places	9
Strategy 1.4 & 2.4: Wayfinding and Signage	10
Strategy 3.1: Affordable Housing Controls and Targets	12
Strategy 3.4: Sport and Recreation Facility Planning	13
Strategy 3.6: Consistent approach in the response to homelessness	14
Strategy 4.2: Urban Forest and Biodiversity Strategy and Approach	16
Strategy 4.4: Increasing Employment Opportunities	17
Strategy 5.4: Implement ESD and Green Demonstration Projects	18
Governance 2017-18	21
Membership of the IMAP Implementation Committee	22
IMAP Reporting	23
Financial Statement	26
Statement of Attendance	28
Progress Report	30
Map	32
Contact Information	back cover

Comment from the Chairs

The Inner Melbourne Action Plan (IMAP) is the successful collaboration between the Inner Melbourne Cities of Melbourne, Port Phillip, Yarra, Stonnington and the Maribyrnong City Council, working together on inner city regional issues to **help make Melbourne one of the world's most liveable cities.**

During 2017-18 the IMAP Implementation Committee's project teams completed work on the Urban Manufacturing research project, the initial Census for Land use and Employment (CLUE) investigations and coordinated the first rough sleeping StreetCount across the five inner City Councils. Our thanks go to the 400 volunteers and many corporate donors and service agencies who supported the expanded StreetCount project on a cold June morning, as well as the Victorian State Government who assisted with funding.

In addition, work continued on a broad range of projects. The Wayfinding and Signage project continues user testing and undertaking design improvements to a 'family' of signs while encouraging support from the State Government for broader adoption. The Regional Active Recreation and Sporting Facilities planning project has now moved onto its future planning stage having consolidated data on facilities across the five Councils. The IMAP Tourism Group continues to advocate for inner Melbourne's key attractions through collaborations on Cultural Tourism Victoria's cultural guide publication for a second year, and contributing to the annual Official Visitor Map publication with Destination Melbourne.

Support for sustainable design initiatives and green roof research as well as developing a new brief for an IMAP Urban Forest project to address the inner city's unique greening challenges, has been ongoing. IMAP continues to look for opportunities where we can achieve a better result from working together.

We also recognize the commitment of the many Council officers and representatives from partnering organizations who continue to work collaboratively to deliver the IMAP projects across Inner Melbourne.



Cr Daniel Nguyen

Mayor
City of Yarra

Cr Bernadene Voss

Mayor
City of Port Phillip

Cr Cuc Lam

Mayor
Maribyrnong
City Council

Cr Steven Stefanopoulos

Mayor
City of Stonnington

Cr Nicholas Reece

Chair, Future
Melbourne (Planning)
Committee
City of Melbourne

Introduction

The Inner Melbourne Action Plan

For twelve years, Melbourne's inner Metropolitan Councils – the Cities of Melbourne, Yarra, Stonnington, Port Phillip and, more recently, Maribyrnong City Council – have worked together to develop and implement the strategies and actions set out in the Inner Melbourne Action Plan (IMAP).

Their aim is to strengthen the liveability, attractiveness and prosperity of the region and respond to growth and changes occurring in the inner city.

The IMAP region hosts the capital city of Victoria, incorporating the major financial, administrative, retail, cultural, and entertainment functions of the State.

The Inner Melbourne Action Plan is unique in bringing key government stakeholders together to develop and deliver regionally based actions within an effective governance framework. IMAP strategies and actions are identified as key areas for regional cooperation within the central city.

In June 2016 the new *Inner Melbourne Action Plan 2016-2026* was approved by the five IMAP Councils and commenced implementation from 2016-17. The plan contains 5 Goals and 27 Strategies across a diverse range of issues affecting the Inner Melbourne region. A number of transition projects from the former plan continue to be implemented under these new strategies. Representatives of the five Inner Melbourne Councils comprise the IMAP Implementation Committee which is responsible for achieving the outcomes identified in the plan.

The IMAP actions have been successful in fostering ongoing cooperation, goodwill and active participation between IMAP stakeholders. The IMAP Councils are uniquely positioned to have an ongoing role in the development of the Inner Melbourne region.



Achievements 2017–18

The Inner Melbourne Action Plan 2016–2026

The review of the Inner Melbourne Action Plan was completed during 2015–16. The revised Plan was referred to the IMAP Councils and adopted without change during May and June 2016.

The new plan has been developed around the Vision Statement and **five** main goals:

Twenty outcome statements noted under these goals further identify where we would like Inner Melbourne to be in ten years time.

These visionary statements helped drive the identification of 27 regional strategies which make up the detail of the new plan.

The IMAP Councils and others aim to implement these strategies over the next few years by completing joint projects identified each November in the rolling IMAP Three year Implementation Program.

Inner Melbourne will continue to improve its internationally-renowned liveability whilst responding to rapid growth. This will be achieved by promoting the following goals:

- **Goal 1:** A globally significant, strong and diverse economy
- **Goal 2:** A connected transport network that provides real travel choices
- **Goal 3:** Diverse, vibrant, healthy and inclusive communities
- **Goal 4:** Distinctive, high quality neighbourhoods and places
- **Goal 5:** Leadership in achieving environmental sustainability and climate change adaptation.

Progress 2017-18





Strategy 1.1: Foster growth in knowledge economy and creative industry sectors

Implementation of the Census of Land use and Employment (CLUE)

Completed: Information Requirements Investigation

The City of Melbourne's Census of Land Use and Employment (CLUE) provides comprehensive information about land use, employment and economic activity across its municipality. The IMAP Implementation Committee is interested in the potential development of an IMAP version of CLUE. To this end the IMAP Councils undertook a three-stage Information Requirements Investigation as follows:

- Stages 1 and 2 assessed the extent to which IMAP Councils' common information needs are being met and their need for CLUE data
- Stage 3 identified some options for meeting the IMAP Councils' information needs and some of the resources and costs involved.

The Stage 3 investigation, undertaken during 2017-18, noted that:

- Although the Australian Bureau of Statistics (ABS) Census provides comprehensive population and housing data, it provides very limited economic data and land use information. CLUE completes this picture by providing comprehensive survey information on these elements.

- The overall benefits and strength of the CLUE data are its reliability, quality, consistency and comparability across time, regions and level of analysis. It is the only comprehensive, accurate source of employment data at the individual establishment level that is collected consistently every two years.

Stage 3 reviewed four options for meeting the IMAP Councils' common information needs via CLUE data collection:

- Business as usual
- Individual Approach – Each Council undertakes its own CLUE survey
- Coordinated Approach – City of Melbourne coordinates the CLUE survey for the IMAP Councils
- Alternatives – possible CLUE data provision by a commercial or non-government organisation.

These options are currently being considered by City of Melbourne, in parallel with delivery of the CLUE Technology Upgrade Project. City of Melbourne has not reached a formal decision regarding options. The other IMAP Councils, while participating in system design have not yet considered their future participation in CLUE data collection.



Smart City Solutions

The CLUE Technology Upgrade Project – 'Taking CLUE to the Cloud for Councils, Communities and Commerce'

The City of Melbourne, in conjunction with its IMAP partners, has commenced a process to modernise the Council owned Census for Land use and Employment (CLUE) database into a cloud based in-browser operating technology system and extending it to the IMAP partners to collect, store, report and publish city business census data. City of Melbourne will develop the system to be interoperable with partner Councils.

In support of this activity, funding from the Australian Government's Smart Cities and Suburbs Program has been secured and representatives from each of the partner Councils have committed additional support (financial and staff assistance) for the Project.

To date, the grant with the Australian Government has been signed, the Human Centred Design workshop held, and the Project Plan developed. Other deadlines include:

- the appointment of a delivery partner,
- development of the technology solution by April 2019, and
- implementation by June 2019.

The funding from the Australian Government's Smart Cities and Suburbs Program doesn't cover collection of the data or integration with Council systems. These aspects require further consideration of options and costs by the partner Councils.

This project received funding from the Australian Government.



Think Tank on Future Disruption

In February 2018 the IMAP Executive Forum agreed to convene a Think Tank to scan Councils' current and future environment to identify and assess the main disruption technologies and threats facing Councils and communities in Inner Melbourne.

The Think Tank was formed in April and reviewed approaches to disruption and innovation as well as identifying challenges, trends and technologies which may cause disruption. Assessment of likely impact and proposed responses to these have not yet been considered.

The definition of disruption used is 'a new approach or business model gaining traction which upsets existing ways of working'. Usually these disruptions have been enabled through digital or related technologies.

Disruption can impact Councils and our communities in a variety of areas:

- Customer need, demand, or satisfaction
- Product or Service delivery models
- Operations (revenue, cost structure and/or business model)
- Customer experience

In-depth analysis and assessment of the trends and technologies identified above has commenced. This work will be finalised during early 2018-19.

Strategy 1.3: Market Inner Melbourne as a world-class tourism destination

IMAP Tourism

The purpose of the IMAP Tourism working group is to work collaboratively to:

- Influence visitors and locals to choose Inner Melbourne as a place to visit, explore and return; and
- Make it easy for visitors and locals to explore and engage with Inner Melbourne.

During 2017-18 the IMAP Tourism Working Group achieved the following:

- Undertook a comprehensive review and update of the IMAP regional tourism map
- Ensured the continued success of the Melbourne Official Visitors Map – a joint collaboration with Destination Melbourne – through funding which enables an annual circulation of one million copies. The IMAP regional tourism map is included within this brochure. A review of the distribution of this map is currently occurring.

- Worked together to review the Greater Melbourne Destination Management Plan prepared by Destination Melbourne. Having the IMAP Tourism working group ensure Councils have a united voice has achieved a better outcome for the group to date. We are still working through this process.
- Promoted attractions in Inner Melbourne for a second year in the cultural guide published by Cultural Tourism Victoria.
- Drafted the next 3-year strategy for the IMAP Tourism working group.
- Working with Visit Victoria to ensure our marketing outcomes are in sync with the state's focus.

External Partners: Destination Melbourne Ltd; Cultural Tourism Victoria; Visit Victoria.

© Cultural Tourism Victoria



© Visual Voice





Strategy 1.4: Ensure Inner Melbourne's activity centres and entertainment precincts are regarded as safe, accessible and vibrant places.

Protecting people in Crowded Places

In August 2017 officers from the IMAP Councils met to review the Federal Government's recently released document *Australia's Strategy for Protecting Crowded Places for Terrorism*, to share insights and identify opportunities for collaboration. The Strategy has Local Government implications, particularly in the areas of event management, emergency management and urban planning.

The working group agreed that the Strategy's templates and checklists for site security are a useful tool and identified the need for a consistent, robust risk management assessment framework, particularly for the planning and conduct of public events. Opportunities to share resources, expertise and specialists in risk management would also be advantageous.

Council event management processes can be improved by creating a comprehensive, standardised risk evaluation tool that can be provided to community members wishing to apply for an event permit. The working group recognised that Councils are best placed to implement the Strategy through education and reassurance campaigns and projects or programs that consolidate community connectivity and pride.

The protection of critical infrastructure and safety considerations embedded systemically into urban design are also imperatives.

Some Councils have now reviewed their site and procedural security. The Working Group reported on their recommendations in February 2018. These are now being followed up on a joint basis and in conjunction with the State Government.

Strategy 1.4: Ensure Inner Melbourne's entertainment precincts are regarded as safe, accessible and vibrant places

Strategy 2.4: Make Inner Melbourne a great place for walking

Wayfinding and Signage

Consistent, well-located wayfinding signage assists people explore unfamiliar areas and travel along unfamiliar routes.

The Melbourne Visitor Signage Coordinating Committee – comprising representatives of IMAP Councils, Wyndham City, Public Transport Victoria and VicRoads – has drafted a set of principles and standards that is expected to improve the consistency and integration of wayfinding signage systems across municipal boundaries and transport modes.

These principles and standards are set out in *Wayfinding Signage Standards for Victoria*, the document endorsed by the IMAP Implementation Committee in May 2017.

Achievements during 2017-18 include:

- *Wayfinding signage standards for Victoria* (the standards document)

A number of IMAP Councils formally adopted *Wayfinding Signage Standards for Victoria* as an operational manual. Other IMAP councils are in the process of adopting the standards.

Prior to launching the standards document more widely, it is being reviewed by a sample of end-users: seven public and private sector organisations from metropolitan Melbourne and regional Victoria whose responsibilities include the design, installation and maintenance of wayfinding signs. Feedback from the review will assist the Committee finalise the design and technical elements contained within the standards document.



Progress 2017-18 ▶ GOALS 1 & 2

- Wayfinding signage (infrastructure) pilot and user testing

The Committee – working with City of Melbourne’s industrial designers – has applied the new principles and standards to the design of a pedestrian wayfinding signage ‘family’. Following prototype testing with users at three different sites across metropolitan Melbourne, in 2017 the City of Melbourne installed the signs in two pilot areas. Comprehensive user testing (prior to and following installation of the signs) was conducted with visitors on the design of the pilot signs and their maps. Intercept surveys with people travelling through the two areas, interviews with business and transport stakeholders, and accompanied journeys with people with particular accessibility requirements were also conducted.

The user testing results were positive: a higher proportion of users were able to orientate themselves and navigate with ease after the pilot signs had been installed, compared with users’ feedback prior to installation of the signs.

Some design changes were made following the user testing and a smaller, narrower sign was added to the ‘family’. The signage design will undergo further review during 2018-19.

The Office of the Victorian Government Architect (OVGA) has been asked to contribute to this.

The ambition is that local Councils adopt a shared wayfinding signage design, that provides reliable, consistent signage for users at lower costs. Already, a few Victorian Councils have expressed interest in adopting the signage ‘family’ designed by the City of Melbourne–Melbourne Visitor Signage Committee collaboration.

- Basemap

‘Collaborating with State Government to develop a single base map for wayfinding signs’ is identified as an opportunity in the *Inner Melbourne Action Plan 2016–2026*. A single, shared map base is expected to benefit local authorities as well as users.

In June 2018, Transport for Victoria (TfV) appointed a Project Manager, Integrated Mapping and Journey Planning who, amongst other things, will be responsible for understanding ‘the potential to integrate mapping across the transport portfolio, infrastructure projects and IMAP Councils.’ Discussions relating to IMAP’s role in TfV’s integrated mapping project will commence during 2018-19.

External Partners: The Coordinating Committee comprises Maribyrnong, Melbourne, Port Phillip, Stonnington, Yarra and Wyndham City Councils and Public Transport Victoria, VicRoads and Transport for Victoria.



Strategy 3.1: Advocate for a substantial increase in the supply of affordable housing

Affordable Housing Controls and Targets

The Community Land Trust (CLT) Research Project

The project's primary aim is to undertake research on Community Land Trust (CLT) options in the Australian context. This aims to guide establishment of a new affordable home ownership tenure in Australia, enabling moderate income households the option to access a new form of home ownership that is perpetually affordable.

In Stage 1, a University of Western Sydney (UWS) team undertook research on CLTs in the USA and UK and how they can be established in Australia, and developed and published the *Australian Community Land Trust Manual* in February 2013. The Manual includes an overview of CLTs, their relevance and potential in Australia, tax issues, possible organisational structures, preliminary financial modelling, two possible legal mechanisms (long-term leaseholds and modified shared equity) and a model long-term lease, co-ownership deed and constitution.

Stage 2 of the project involves the preparation of a companion document providing:

- A risk management framework for banks considering lending to home purchasers in CLTs.
- Case studies of prospective CLTs.
- Market research involving potential home purchasers to test interest in purchasing dwellings in CLTs without the underlying land.
- The applicability of the CLT model to other legal tenure options, such as retirement villages, strata title and trustee companies.
- Guidance for the development process/risks involved in CLT housing.

The scope of the Stage 2 work had been expanded in a number of areas, including the market research and additional legal tenure options. This has extended the timeline for completion by the UWS from the end of 2017 until October 2018, when the companion document (Stage 2) will be published.

CLT External partners: University of Western Sydney; St Kilda Community Housing; Mount Alexander Community Land Ltd; Hobart Ecovillage; SEMZ Property Group; Tasman Ecovillage; Committee for Lorne.



Strategy 3.4: Deliver regional sporting and recreation facilities offering diverse opportunities

Sport and Recreation Facility Planning

The Regional Active Sport & Recreation Facilities Planning Study

The aim of this project is to assess the future provision of sport and recreation facilities, with the focus on active outdoor sport and recreation facilities and aquatic centres for the IMAP area.

The project comprises two stages:

- Stage 1 - Information Coordination and Analysis (completed in 2016-17).
- Stage 2 - Future Planning (commenced in 2017-18, current expected completion date October 2018).

Following the completion of Stage 1, the Project Working Group, comprising representatives from the IMAP Councils, Sport and Recreation Victoria and the Victorian Planning Authority worked collaboratively on refining the project scope, which was endorsed by the IMAP Implementation Committee in October 2017.

A Request for Quotation Process was subsequently conducted resulting in the engagement of SGS Economics and Planning, with Stage 2 of the project officially commencing in March 2018.

In conjunction with SGS Economics and Planning, the project team has agreed on the project work plan. The proposed project completion date is 1 October 2018.

Stage 2 actions completed at the end of the 2017-18 financial year include:

- Stage 1: Project Inception.
- Stage 2: Detailed Context Review.
- Stage 3: Demand Forecasting.

Further actions to be completed between the start of July and 1 October 2018 include:

- Stage 4: Supply Assessment
- Stage 5: Strategy and Action Plan
- Stage 6: Final Reporting.

This project has created a useful network for sharing information, issues and challenges and has developed greater collaboration between the municipalities.

The extension to the timeframe has occurred primarily as a result of the difficulties coordinating input and feedback across the IMAP Councils, particularly in finalising the project scope. Since the appointment of SGS Economics and Planning, Stage 2 of the project has been delivered according to the agreed project plan to date.

This project received funding from the Victorian State Government.

External partners: Victorian Planning Authority; Sport and Recreation Victoria.



Strategy 3.6: Implement joint programs to improve the health, wellbeing and safety of the Inner Melbourne community

Consistent approach in the response to homelessness

Completed: 2018 IMAP StreetCount

At the IMAP Implementation Committee meeting of 24 February 2018, the Committee resolved to undertake a joint rough sleeper StreetCount in June 2018 across member municipalities. A StreetCount is a point in time observational count and survey of people sleeping rough in parks, streets and other areas across Inner Melbourne.

In April 2018 the Minister for Housing approved a contribution of \$50,000 to the joint StreetCount project. The working group engaged with relevant staff from the Department of Health and Human Services for the project.

On Tuesday 19 June, a bitterly cold winter night in Melbourne, 392 people were counted sleeping rough across inner Melbourne.

As part of StreetCount 2018, 400 trained volunteers hit the streets, visiting parks, river banks and laneways to collect information on people sleeping rough.

It was the first joint count undertaken of rough sleepers across five inner cities of Melbourne, Port Phillip, Yarra, Stonnington, and Maribyrnong. The City of Melbourne has undertaken the count since 2008. Of the 392 people sleeping rough, 279 were counted across the entire municipality of Melbourne and 65 in the municipality of Port Phillip.

The count and survey helps Councils to understand rough sleeping, so they can better plan their support services and work towards long-term solutions to address homelessness. The IMAP Councils gained a greater understanding of the nature of homelessness in the city, have forged better networks and relationships as a result of this collaboration and placed a media spotlight on the problem of homelessness and affordable housing in the inner city.

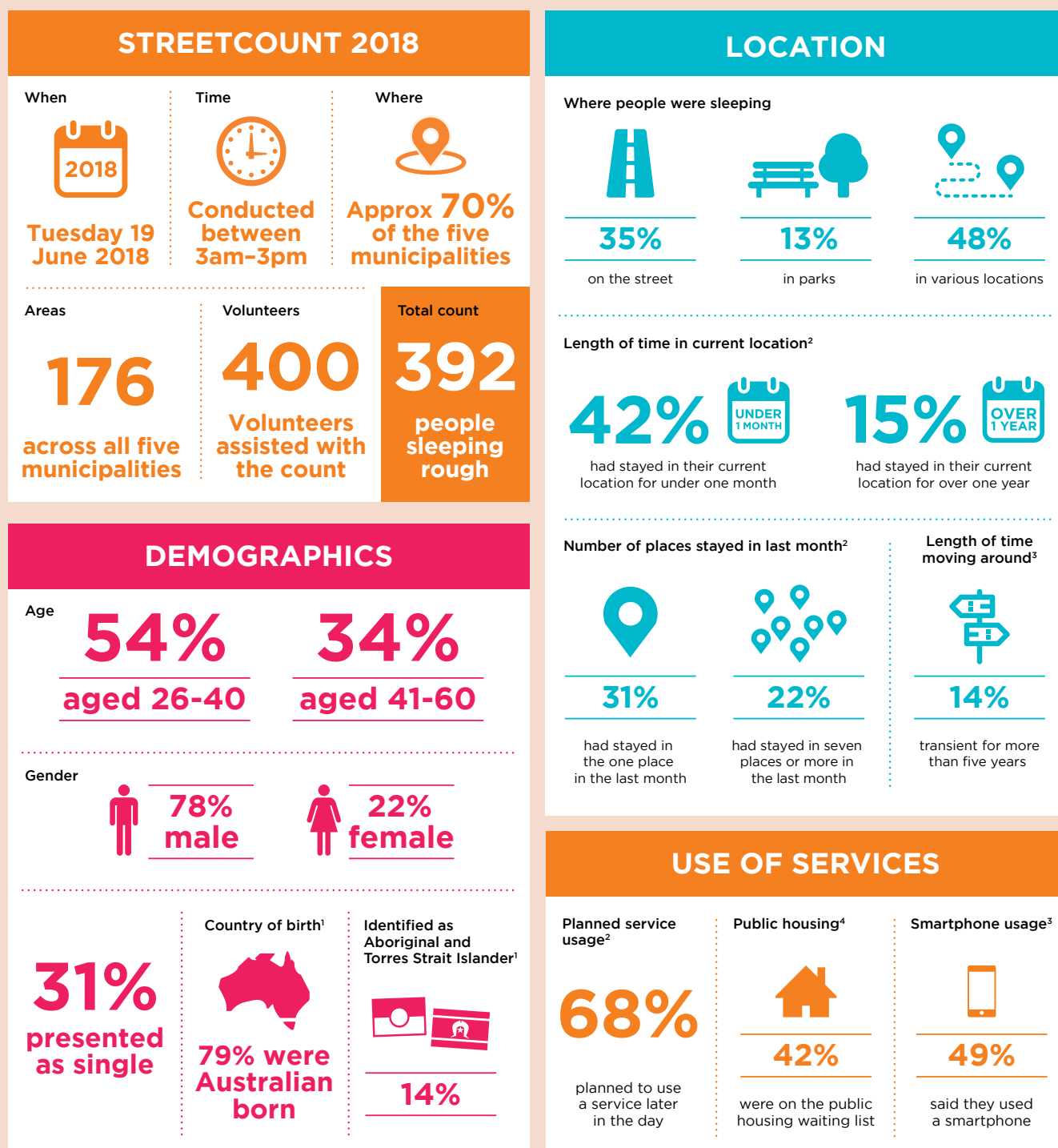
Next steps are to use this understanding to advocate for greater support for these residents across Inner Melbourne and to provide improved service coordination across the IMAP Councils.

This project received funding from the Victorian State Government.



StreetCount 2018: A snapshot of people living rough

StreetCount 2018 aims to continue to develop an understanding of rough sleeping in Melbourne. This was the first joint count of people sleeping rough in the Cities of Melbourne, Maribyrnong, Yarra, Stonnington and Port Phillip. Thank you to the many volunteers and partner organisations who assisted in StreetCount 2018.



External partners: Victorian State Government; Launch Housing and other support agencies; Victorian Police; corporate donors and volunteers.

© University of Melbourne



Strategy 4.2: Integrate water sensitive landscapes, substantial tree canopies, biodiversity and habitat into the design of all parks and public space (i.e. streets) areas right across Inner Melbourne

Urban Forest and Biodiversity Strategy and Approach

IMAP Urban Forest Plan

The loss of broad canopy trees is a major concern to all 5 IMAP Councils. Evidence to date indicates increases in tree cover in the public realm, the streets and open spaces. These gains however are being offset by the losses on private land.

To achieve gains and develop a region wide urban forest, IMAP's Urban Forest Plan will seek to examine new ways of protecting and increasing tree planting and green infrastructure (urban landscapes) on private land.

The Urban Forest Plan will focus on private land and the mechanisms to retain urban landscapes, particularly trees through guidelines and policies that may involve incentives or deterrents.

The objective is to increase tree canopy and landscape cover to improve the environmental quality of the IMAP region, human health, amenity, liveability and appeal.

The IMAP Urban Forest Plan proposes a number of strategies to improve the environment of the IMAP region through deliverables that include education, data assessments and planning policy which would be tailored to suit the needs of individual Councils.

The project is being developed to provide a value add and uplift to the other Urban Forest initiatives such as are being undertaken by Resilient Melbourne and Vision 2020.

Following IMAP Committee approval in May 2018, a brief for services is being developed.

Strategy 4.4: Ensure urban renewal contributes to distinctive high quality local neighbourhoods and positive development outcomes in medium and high density environments

Increasing Employment Opportunities

Completed: Urban Manufacturing Project – the Dilemma of Urban Employment land

The study by the IMAP Councils, University of Melbourne, Moreland City Council and the Victorian Government examined the significance of small urban makers to the Victorian economy as an emerging production sector in Melbourne. The project also conducted research into the significance of these makers to inner Melbourne's employment offer so as to inform decisions about industrial, commercial and residential land use.

The study aimed to help guide strategic decisions regarding the rezoning of land and illuminate the impacts on small urban manufacturers of planning controls.

Development of the www.makers.melbourne website aimed to provide a platform for makers to spatially identify their business, promote the creative and diverse industries of the sector and assist the project by capturing information via online survey on employment, supply chains, transport and logistics and future needs of the businesses. Additional telephone surveys were conducted with makers to supplement those from the website.

A review of international policy and domestic peak groups was completed to gain an appreciation of how other cities have planned for and supported makers and to assess the level of engagement peak groups currently have with the sector.

A summary report on the project findings was delivered in May 2018 which tabled both a Phase 2 Report and the Policy and Peak Group Review. This summary noted the lower than hoped for response rate to the project's survey (302 responses against the goal of 2000). As a result, a baseline dataset of statistical significance was not reached.

This identified the challenge for government in tracking a sector with a disparate nature and reinforced findings from the Policy and Peak Group Review that increased engagement from peak/industry groups with makers would assist government and give makers a 'voice'.

IMAP members identified projects of similar scope by other bodies and committed to putting the project team in contact with these groups as well as attempting to capture information on makers through IMAP's CLUE project.

This project received funding from The University of Melbourne – Carlton Connect, Victorian Planning Authority and Moreland City Council.



External Partners: The University of Melbourne; Victorian Planning Authority; Department of Environment, Land, Water and Planning; Department of Economic Development, Jobs, Transport and Resources, Moreland City Council.

Strategy 5.4: Increase uptake of environmental sustainable design (ESD)

Implement ESD and Green Demonstration Projects

Completed: Mimicking natural ecosystems to improve green roof performance – ARC Linkage grant partnership

IMAP, Melbourne Water and the Australian Research Council has funded a three year University of Melbourne industry Linkage Grant that aims to improve the hydrological and energy performance of green roofs by learning from natural ecosystems. It is hoped that improving the stormwater capture and cooling functions of green roofs will increase their uptake in Melbourne's inner city. There have been three PhD students, a postdoctoral researcher and research assistant working on the project. The project is nearing completion. Its many findings are directly applicable to IMAP Councils but will also promote green roof uptake across Australia illustrating the ongoing and wide impact of the research IMAP Councils have funded.

Andrea Pianella's PhD on green roof thermal performance. His results showed the limitations of existing green roof thermal models and identified the importance of substrate type and thickness, and plant selection to maximise green roof thermal performance. He also investigated the role of moisture content retained in the substrate, which increases the thermal mass and performance of green roof in summer, particularly when used by drought tolerant high water use plants. Modelling for a single-storey brick office with a concrete roof showed potential savings of up to 65% in heating and up to 35% in cooling loads. A grant application to Horticulture Innovation (the funding body for the horticultural industry) has been submitted to use Andrew's results to model the building energy benefits of green roofs for a range of building types in different cities, and therefore climates, around Australia.

Joerg Werdin's PhD is investigating the potential use of biochar to make green roof substrates lighter and increase water and nutrient retention. In his first experiment he related the wood cell structure of 18 different eucalypt species with the water holding properties of their corresponding biochars. This research has revealed a strong relationship between wood density and biochar water holding capacity, showing that biochar made from low density wood can retain greater amounts of water and is lighter than biochar made from high density wood. This has implications not only for green roof substrates but also for agricultural soils and horticultural substrates, where amendment with high water retaining biochar can improve plant growth and yield. Joerg is working on his first publication and preparing experiments to determine optimal particle size and amendment rates of biochar for green roof substrate mixtures.

Zheng Zhang's PhD research has determined that a 100 mm deep green roof in Melbourne will retain 84–95% of expected annual stormwater runoff. Most of this is due to water holding capacity of the substrate and drainage layer, and is because Melbourne has lots of small rainfall events. For example, only 33% of rainfall events will result in any runoff from a 100 mm green roof and this decreases to 23% for a 200 mm deep green roof. Only large rainfall events lead to runoff. The choice of plant species had no influence on green roof stormwater retention performance for small rainfall events but was important for larger events as species with high evapotranspiration rates increased available storage before rainfall.

External Partners: The University of Melbourne; Melbourne Water, Australian Research Council.

© University of Melbourne



Zheng also found that the rooting characteristics of the plant species used on green roofs can negatively impact their stormwater retention performance by creating preferential flow pathways. This is a novel finding with implications for the green roof industry worldwide.

Postdoctoral researcher Dr Chris Szota previously developed a model which simulates how different combinations of substrates and plant species can improve the stormwater mitigation benefits of green roofs. The research group recently applied this model to Australia's capital cities to determine the most important climatic drivers of green roof rainfall retention performance (e.g., seasonality of rainfall). The model is now being used to reverse engineer green roofs by determining the substrate type and depth, as well as the plant species, required to achieve rainfall retention targets in each capital city. This work will assist policy makers across Australia by helping them specify green roof designs to optimise water storage capacity and achieve stormwater reduction targets.

Publications

Zheng Z., Szota, C., Fletcher, T.D., Williams, N.S.G., Werdin, J. and Farrell, C. (2018) Influence of plant composition and water use strategies on green roof stormwater retention. *Science of the Total Environment* 62,5 775–781

Pianella, A., Aye, L., Chen, Z., Williams, N.S.G. (2017) Substrate depth, vegetation and irrigation affect green roof thermal performance in a Mediterranean type climate. *Sustainability* 2017, 9, 1451

Szota, C., Fletcher, T.D., Desbois, C., Rayner, J.P. Williams, N.S.G., Farrell, C. (2017) Laboratory tests of substrate physical properties may not represent the retention capacity of green roof substrates in situ. *Water* 9, 920

Szota, C., Farrell, C., Williams, N.S.G., Arndt, S.K. and Fletcher, T.D. 2017. Drought-avoiding plants with low water use can achieve high rainfall retention without jeopardising survival on green roofs. *Science of the Total Environment* 603: 340–351.

Pianella, A., Clarke, R.E., Williams, N.S.G., Chen, Z. and Aye, L (2016) Steady-state and transient thermal measurements of green roof substrates. *Energy and Buildings* 131, 123–131

Media

ABC television and radio news and online. Sunday 20th May. Green roofs for Australian cities would help reduce flooding and save on bills, study shows <http://www.abc.net.au/news/2018-05-20/why-australia-needs-more-rooftop-gardens/9775464>



Sustainable Design Factsheets Project

Since 2012 the IMAP councils have been jointly developing a suite of Sustainable Design fact sheets. They provide detailed advice on sustainable building design requirements that should be addressed during the early design process and when lodging a planning permit application. The fact sheets underpin the Sustainable Design in the Planning Process (SDAPP) framework.

The original set of 11 Sustainable Design fact sheets were supplemented in 2016 with an additional 5 fact sheets (the 2nd suite) which expanded on the original themes.

A further 5 fact sheets (the 3rd suite) were approved later in 2016 to include the following new themes:

- Daylight – *aligned with category 1.0 Indoor Environment Quality*
- Ventilation – *aligned with category 1.0 Indoor Environment Quality*
- Windows and Glazing – *aligned with category 5.0 Materials*
- Car Share – *aligned with category 6.0 Transport*
- Innovation Strategies – *aligned with category 9.0 Innovation*

Daylight and Natural Ventilation have now progressed to final design stage and the remaining three have made good progress.

The number of Councils using the Fact Sheet continues to expand, ensuring consistent application of sustainable design assessment across municipal boundaries.

External Partners: The factsheets are currently being promoted by the following Councils in addition to the IMAP councils: Banyule, Darebin, Greater Dandenong, Greater Geelong, Hume, Knox, Kingston, Manningham, Monash, Moreland, Nillumbik, Whitehorse, Whittlesea, Hobson's Bay, Greater Bendigo, Wyndham City – and MAV (Council Alliance for a Sustainable Built Environment). Copies of the Sustainable Design Factsheets are available on the IMAP and Council websites. Council enquiries are welcome.

Governance 2017-18



Membership of the IMAP Implementation Committee

The Cities of Melbourne, Yarra, Stonnington, Port Phillip and the Maribyrnong City Council have each established identically constituted section 86 Special Committees, in accordance with the Local Government Act 1989. These Committees meet as one, and provide a coordinated decision-making process to facilitate the implementation of the Inner Melbourne Action Plan (IMAP) dated January 2006, as adopted by member Councils in December 2005, and its updated version in June 2016. Maribyrnong City Council established its Special Committee in June 2013 to come into effect on 1 July 2013.

The Committee consists of ten members, being one councillor and the Chief Executive Officer (or specified Executive Director) from each of the municipalities.

Committee Members: 1 July 2017 – 30 June 2018

Cr Nicholas Reece, Chair, Future Melbourne (Planning) Committee, City of Melbourne (1 July 2017 – 30 June 2018)

Ms Kate Vinot, Director City Strategy and Place, City of Melbourne (1 July 2017 – 30 November 2017)

Ms Michelle Fitzgerald, Acting Director City Strategy and Place, City of Melbourne (1 December 2017 – 31 April 2018)

Ms Claire Ferres-Miles, Director City Strategy and Place, City of Melbourne (1 May 2018– 30 June 2018)

Cr Amanda Stone, Mayor, City of Yarra (1 July 2017 – November 2017)

Cr Daniel Nguyen, Mayor, City of Yarra (November 2017– 30 June 2018)

Ms Vijaya Vaidyanath, Chief Executive Officer, City of Yarra (1 July 2017 – 30 June 2018)

Cr Jami Klisaris, Mayor, City of Stonnington (1 July 2017 – November 2017)

Cr Steven Stefanopoulos, Mayor, City of Stonnington (November 2017 – 30 June 2018)

Mr Warren Roberts, Chief Executive Officer, City of Stonnington (1 July 2017 – 30 June 2018)

Cr Bernadene Voss, Mayor, City of Port Phillip (1 July 2017 – 30 June 2018)

Mr Peter Smith, Chief Executive Officer, City of Port Phillip (1 July 2017 – 30 June 2018)

Cr Sarah Carter, Deputy Mayor, Maribyrnong City Council (1 July 2017 – November 2017)

Cr Cuc Lam, Mayor, Maribyrnong City Council (November 2017 – 30 June 2018)

Mr Stephen Wall, Chief Executive Officer, Maribyrnong City Council (1 July 2017 – 30 June 2018)

Associate Committee Members

The Terms of Reference provides that representatives from the following associate partner organisations are invited to attend the meetings of the IMAP Implementation Committee.

- Department of Environment, Land, Water and Planning (DELWP) – 2 representatives
- Department of Economic Development, Jobs, Transport and Resources (DEDJTR) – 2 representatives
- Victorian Planning Association – 1 representative
- VicRoads– 1 representative

IMAP Reporting

Executive's Forum Meetings

The Executive's Forum Meeting is a leadership meeting of IMAP's senior executives, aimed at determining and driving regional priorities and programs, identifying synergies and opportunities and providing support to the IMAP Executive Officer. Forums are held as the need arises. Outcomes of the IMAP Executive's Forums are reported back to the IMAP Implementation Committee in formal minutes as an agenda item for discussion and ratification.

2 November 2017

Key items on the agenda were:

- **Resilient Melbourne:** update on project governance for flagship projects
- **Implementation of Census for Land Use and Employment (CLUE):** Information requirements investigation: brief for Phase 3 of the project
- **Liquor licensing submission on definitions:** discussion on next steps

Minutes were tabled and ratified at the 24 November 2017 IMAP Implementation Committee meeting

9 February 2018

Key items on the agenda were:

- **Protecting people in crowded places:** briefing paper on coordination opportunities
- **Consistent approach in the response to homelessness - IMAP Combined StreetCount:** report on the Feasibility Study
- **IMAP Operational Protocol:** report on amendments
- **Think Tank on disruption technologies:** proposal

Minutes were tabled and ratified at the 23 February 2018 IMAP Implementation Committee meeting

17 May 2018

Key items on the agenda were:

- **Consistent approach in the response to homelessness - IMAP Combined StreetCount:** update
- **IMAP Future disruption technologies:** preliminary report from the Think Tank
- **Implementation of Census for Land Use and Employment (CLUE):**

- **Information requirements investigation (Phase 3):** final report

- **CLUE technology upgrade project:** Memorandum of Understanding

- **Melbourne official visitor map:** Agreement with Destination Melbourne

Minutes were tabled and ratified at the 25 May 2018 IMAP Implementation Committee meeting

IMAP Implementation Committee Meetings

25 August 2017

(Host: City of Stonnington)

Key items on the agenda were:

- **Wayfinding and signage:** approval of the Wayfinding and Signage project brief for ongoing work and budget provision
- **Implementation of Census for Land Use and Employment (CLUE):** Information requirements investigation (Phase 2): progress report on preliminary research
- **Increasing employment opportunities – Urban Manufacturing Project:** progress report on retrieving data
- **Social and cultural heritage protection:** consideration of places of social significance
- **Protecting people in crowded places:** response to the Federal Government report
- **Communications:**
 - Wayfinding: Site visit at Southern Cross Station with reps from external Councils to view wayfinding signage pilot infrastructure; meeting with Parks Victoria
 - IMAP Tourism: IMAP reps provided input to the Destination Management Plan Steering Group
 - The CLUE Smart City application was submitted to the Australian Government with support letters from IMAP partners and State Government departments
 - Published and launched the Cultural Guide in conjunction with Cultural Tourism Victoria

Minutes were tabled and ratified at the 24 November 2017 IMAP Implementation Committee meeting

24 November 2017

(Host: Maribyrnong City Council)

Key items on the agenda were:

- **IMAP Operational Protocol:** approval of 2017 update
- **Draft IMAP Annual Report 2016–17** and Summary
- **IMAP Three Year Implementation Program:** review of the rolling 3 year budget
- **Disruption technologies:** discussion on current issues facing Councils
- **Communications:**
 - IMAP Tourism: Communications with Destination Melbourne on Destination Management. Plan feedback; meeting with Visit Victoria
 - Urban Forest and Biodiversity: met with Nature Conservancy staff regarding the IMAP project and its relationship with the Resilient Melbourne project

Minutes were tabled and ratified at the 23 February 2018 IMAP Implementation Committee meeting

23 February 2018

(Host: City of Port Phillip)

Key items on the agenda were:

- **Presentation:** Update on Metropolitan Partnerships
- **Presentation:** Mimicking natural ecosystems to improve green roof performance
- **Managing conflicts in Activity Centres:** update on reviews of planning and liquor legislation
- **Protecting people in crowded places:** briefing paper
- **Consistent approach in the response to homelessness:** Draft IMAP Combined StreetCount feasibility study
- **Communications:**
 - Wayfinding and signage: meetings with Transport for Victoria and PTV staff on collaboration with State Government
 - IMAP Tourism: met with Destination Melbourne on the Boards 3 year Strategy and with representatives of Visit Victoria on their latest promotion campaign
 - Smart City solution to upgrade CLUE: confirmation of a successful grant application in November

Minutes were tabled and ratified at the 25 May 2018 IMAP Implementation Committee meeting

25 May 2018

(Host: City of Yarra)

Key items on the agenda were:

- **Consistent approach in the response to homelessness – IMAP Combined StreetCount:** progress report and confirmation of State Government funding contribution
- **Increasing employment opportunities – Urban manufacturing:** Phase 2 final report
- **Urban forest & biodiversity strategy and approach:** Urban Forest draft project brief
- **Sport and recreation facility planning – IMAP Regional Active Sport and Recreation Facilities Planning Study:** Stage 2 progress report
- **Wayfinding and signage:** progress report
- **Communications:**
 - Homelessness StreetCount: coordination arranged through Launch Housing; and met with Council of Capital City Lord Mayors homelessness project team
 - Urban Forest and Biodiversity: liaison with 2020 Vision tour

Minutes were tabled and ratified at the 25 August 2017 IMAP Implementation Committee meeting

IMAP Steering groups

- The Steering Groups considered the following projects during July 2017 – June 2018:

Goal 1 – IMAP Economy Steering Group

19 January 2018

- **Smart City Solutions:** presentation on the Census for Land Use and Employment (CLUE) outlining a time line, project plan and governance model for the IMAP CLUE project
- **Information Requirements Investigation (CLUE):** proposed brief for Phase 3 of the project

19 April 2018

- **Smart City Solutions:** progress update and consideration of a draft Memorandum of Understanding
- **Information Requirements Investigation (CLUE):** draft final report for Phase 3

21 June 2018

- **IMAP Tourism Working group:** draft Three-year Strategy
- **Information Requirements Investigation (CLUE):** discussion on next steps
- **Smart City Solutions:** update on the CLUE technology upgrade project

Goal 3 – IMAP Communities Steering Group

16 November 2017

- **Consistent Approach in the Response to Homelessness:** discussion of recommendations included in the Homelessness Discussion paper.
- **Affordable Housing:** general background discussion

8 February 2018

- **Consistent Approach in the Response to Homelessness:** Considered the IMAP combined StreetCount draft feasibility study and the logistics of a June count; received the template protocol for responses to Homelessness

10 May 2018

- **Consistent Approach in the Response to Homelessness:** update on the progress of the IMAP Combined StreetCount; discussion on developing a communications and advocacy strategy around the results.

Goal 4 – IMAP Neighbourhoods and Places Steering Group

11 May 2018

- **Urban Forest and Biodiversity Strategy and Approach:** consideration of the draft project brief



Financial Statement

Total income for the 2017-18 financial year to the Inner Melbourne Action Plan [IMAP] derived from IMAP partner Councils and other contributors was **\$395,410**.

This includes the IMAP partner Councils' annual project contribution of \$275,000.

Additional funding was received as follows:

- The City of Maribyrnong and City of Yarra's contributions of \$25,000 each towards the CLUE technology upgrade project were paid to the IMAP account pending on-payment to the City of Melbourne in 2018-19 when the Memorandum of Understanding is signed.
- The Cities of Yarra, Port Phillip, Stonnington and Maribyrnong contributed an additional \$20,000 towards the IMAP 2018 StreetCount.
- IMAP received a \$50,000 Victorian State Government grant towards the IMAP 2018 StreetCount project.

Total expenditure for the 2017-18 financial year for professional services on IMAP projects, publications, website hosting, administration and sundry items relating to IMAP Actions was **\$467,414**. This is a higher level of expenditure than in recent years and reflects a number of projects reaching implementation or completion after a significant time in planning or data gathering stages.

This results in an over-expenditure in the IMAP account of **\$72,004** this financial year.

Retained Earnings carried forward from the previous financial year as at 1 July 2017 was **\$707,401**.

Therefore the Accumulated Surplus for the year ending 30 June 2018 was **\$632,397**. This surplus includes:

1) Budgeted funds committed to current ongoing and new projects:

IMAP plan publication and website funding	\$45,839
Balance of funds for the CLUE technology upgrade project (Council contributions)	\$50,000
Balance of funds for the ongoing Regional Tourism Projects	\$49,021
Balance of funds for the Wayfinding and Signage project	\$5,398
Balance of funds for Phase 2 Active Recreation Facilities Planning Project	\$22,727
Balance of funds for final expenses on the 2018 StreetCount project	\$48,595
Funding for the recently approved IMAP Urban Forest and Biodiversity project	\$50,000
Balance of funds for Phase 3 of the ESD Factsheets Project	\$18,950
Total committed funding	\$290,530

2) Funds allocated across new projects identified by the Inner Melbourne Action Plan:

Funding has been assigned to two priority projects in the Three year Implementation Program commencing 2017-18 that are still at preliminary stages – the Waste Cycle Project (\$50,000) and the Bicycle Network Project (\$50,000) which are scheduled for delivery over 2-3 years.

In addition, an accumulated surplus is also provided for in the Three year Implementation Program to enable the development of future projects – which accounts for the balance (\$241,800). The program was approved by the IMAP Implementation Committee on 9 December 2016, and reviewed on 24 November 2017.

These funds accumulate due to project timing and will be carried forward to 2018-19.

IMAP Financial Statement as at 30 June 2018

Actual to 30 June 2018 (\$)

INCOME

Annual IMAP Council Partner contributions	275,000
Other Contributions	120,410
CLUE technology upgrade project:	
– City of Maribyrnong contribution	25,000
– City of Yarra contribution (Note 1)	25,000
IMAP 2018 StreetCount project:	
– City of Maribyrnong contribution	5,000
– City of Yarra contribution	5,000
– City of Stonnington contribution	4,000
– City of Port Phillip contribution	6,000
– State Government of Victoria (DHHS) (Note 2)	50,000
IMAP Regional Tourism map – Licence fee	410
Total Income	395,410

EXPENDITURE

Professional Services	441,551
CLUE Project – Information Requirements Investigation	24,500
CLUE Smart City Project – CLUE technology upgrade: IMAP contribution	50,000
Wayfinding Signs: Visitor Signs project	28,050
Active Recreation Facilities Planning project (Note 3)	77,273
IMAP 2018 StreetCount project	71,406
Support Creative Business: Urban Manufacturing project	81,007
Regional Tourism	109,315
IMAP Annual Report 2016-17	5,530
IMAP Website Administration	4,892
IMAP Review – graphic design	8,300
Sundry Expenditure	7,141
Total Expenditure	467,414
Net Profit (Loss) for Year Ending 30 June 2018	(72,004)
Retained Earnings Carried Forward (2016-17)	704,401
Accumulated Surplus for Year Ending 30 June 2018	632,397

Note 1: The IMAP Councils are co-funding partners with City of Melbourne (CoM) on the Smart Cities and Suburbs grant for the CLUE project. CoM holds the \$350K grant and contributes the largest budget for this project. IMAP project funds have contributed \$50K. Additional contributions from CoMar and CoY were paid to the IMAP account in 2017-18 pending payment to the CoM upon signing the Memorandum of Understanding in 2018-19. CoPP paid CoM direct. CoS has made budget provision in 2018-19.

Note 2: IMAP project funds contributed \$50K and collected additional contributions from 4 IMAP Councils and the State Government towards the StreetCount project. City of Melbourne paid additional expenses directly from that Council's StreetCount project budget.

Note 3: The 5 IMAP Councils contributed \$10K each in additional funding to the Recreation project. These contributions were paid to the IMAP account in 2015-16 and 2016-17 awaiting Phase 2 expenditure. The balance has been contributed from IMAP project funds. CoM holds the SRV grant of \$50K for this project.

Note 4: The IMAP Executive Officer position has been hosted by the City of Stonnington with the IMAP Councils each contributing a quarter of the operational costs annually from 2010-11 to 2012-13 and a fifth from 2013-14. This contribution is not indicated above.

Statement of Attendance

From 1 July 2017 to 30 June 2018

Committee member	Position	IMAP Implementation Committee Membership dates to 30 June 2018	Meeting attendance		
			Attended	Apology	Total Meetings
Cr Amanda Stone	Mayor, City of Yarra	Jul 2017 – Nov 2017	1	1	2
Cr Daniel Nguyen	Mayor, City of Yarra	Dec 2018– Jun 2018	2	0	2
Ms Vijaya Vaidyanath	Chief Executive Officer, City of Yarra	Jul 2017 – Jun 2018	1	3	4
Cr Bernadene Voss	Mayor, City of Port Phillip	Jul 2017 – Jun 2018	3	1	4
Mr Peter Smith	Chief Executive Officer, City of Port Phillip	Jul 2017 – Jun 2018	4	0	4
Cr Jami Klisaris	Mayor, City of Stonnington	Jul 2017 – Nov 2017	1	0	1
Cr Steven Stefanopoulos	Mayor, City of Stonnington	Nov 2017 – Jun 2018	3	0	3
Mr Warren Roberts	Chief Executive Officer, City of Stonnington	Jul 2017 – Jun 2018	3	1	4
Cr Nicholas Reece	Chair, Future Melbourne (Planning) Committee, City of Melbourne	Jul 2017 – Jun 2018	3	1	4
Ms Kate Vinot	Director City Strategy and Place, City of Melbourne	Jul 2017 – Nov 2017	1	1	2
Ms Michelle Fitzgerald	Acting Director City Strategy and Place, City of Melbourne	Dec 2017 – May 2018	0	1	1
Ms Claire Ferres-Miles	Director City Strategy and Place, City of Melbourne	May 2018 – Jun 2018	1	0	1
Cr Sarah Carter	Deputy Mayor, Maribyrnong City Council	Jul 2017 – Nov 2017	0	1	1
Cr Cuc Lam	Mayor, Maribyrnong City Council	Nov 2017 – Jun 2018	2	1	3
Mr Stephen Wall	Chief Executive Officer, Maribyrnong City Council	Jul 2016 – Jun 2017	3	1	4

Statement of Attendance

Associate Partner Representatives

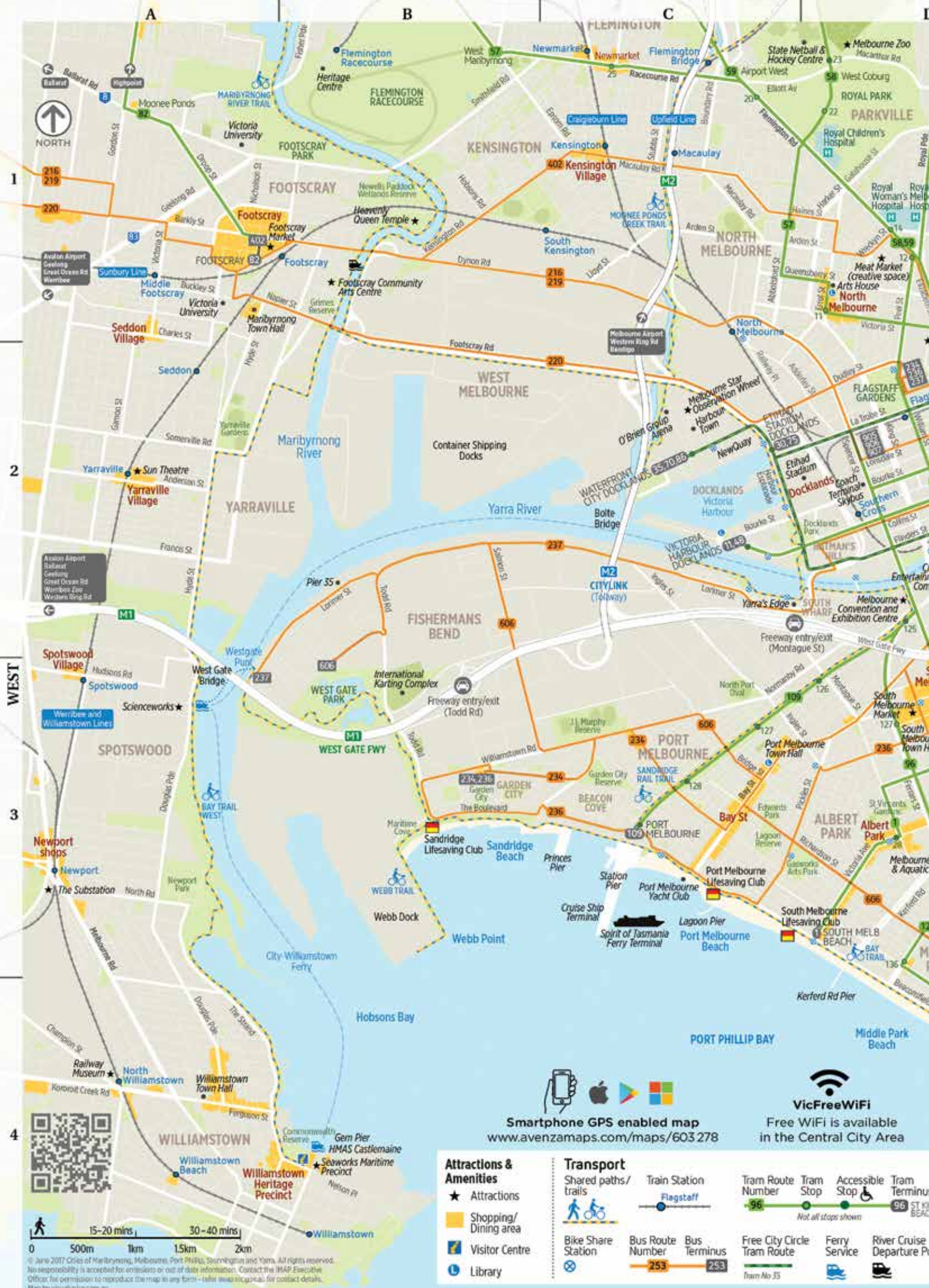
Associate member	Government Department	Meeting attendance		
		Attended	Apology	Total Meetings
Ms Cate Turner	Department of Economic Development, Jobs, Transport and Resources (DEDJTR)	3	1	4
Mr Michael Hopkins	Department of Economic Development, Jobs, Transport and Resources (DEDJTR)	0	1	1
Mr David Silvester	Department of Economic Development, Jobs, Transport and Resources (DEDJTR)	1	0	1
Mr Dimitri Lolas (<i>for Dr E Legare</i>)	Department of Economic Development, Jobs, Transport and Resources (DEDJTR)	1	0	1
Mr Adrian Salmon	Department of Environment, Land, Water and Planning (DELWP)	2	2	4
Mr Rod Anderson	Department of Environment, Land, Water and Planning (DELWP)	2	2	4
Mr Vince Punaro	VicRoads	1	1	2
Mr David Teague (<i>for V Punaro</i>)	VicRoads	1	0	1
Mr Stan Januszkiewicz (<i>for V Punaro</i>)	VicRoads	1	0	1
Mr Peter Sagar	Victorian Planning Authority	1	0	1
Ms Emily Mottram	Victorian Planning Authority	2	0	2
Mr Robert Davies (<i>for E Mottram</i>)	Victorian Planning Authority	1	0	1

Progress Report

	Strategies	Project	Status
Goal: Economy	1. Foster growth in knowledge economy and creative industry sectors	G1.P1 Implementation of Census of Landuse and Employment (CLUE) • Information Requirements Investigation	Current
	2. Promote investment in specialist economic clusters	G1.P2 Smart City Solutions • CLUE Technology Upgrade Project • Think Tank: Future Disruption Technologies	Current Current
	3. Market Inner Melbourne as a world-class tourist destination	G1.P4 Wayfinding and Signage G1.P5 IMAP Tourism	Current Current
	4. Ensure Inner Melbourne's entertainment precincts are regarded as safe, accessible and vibrant places	G1.P3 Managing Licenced Premises & Entertainment Precincts • Liquor Licensing and Planning Definitions • Protecting People in Crowded Places	Current Current
Goal: Transport	1. Develop an integrated and connected regional transport network	G2.P7 IMAP and PTV Partnership	
	2. Advocate to improve public transport across Inner Melbourne	G2.P4 Public Transport Standards	
	3. Make Inner Melbourne a 'cycling friendly' region	G2.P1 Business Case: Inner Melbourne Cycling Network	
	4. Make Inner Melbourne a great place for walking	G2.P5 Promote Walking • <i>Wayfinding and Signage also applies to this Goal</i>	Current
	5. Reduce the impact of through traffic across Melbourne	G2.P2 Planning for Future Vehicles	
	6. Advocate for re-prioritised road space which allocates/prioritises walking, bike-riding and public transport on selected roads	G2.P3 Travel Mode Research	
	7. Delineate a priority freight network to meet the needs of the increased freight task	G2.P6 Infrastructure Victoria Priorities	
Goal: Communities	1. Create a substantial increase in the supply of affordable housing	G3.P2 Affordable Housing Controls and Targets • Community Land Trust	Current
	2. Advocate to achieve improved design quality, internal amenity standards, environmental sustainability and diversity of apartments and all new/refurbished homes		
	3. Plan and deliver regional and local community infrastructure and services for growing resident and worker populations	G3.P3 IMAP Communities Infrastructure Plan 2026	
	4. Deliver regional sporting and recreational facilities offering diverse opportunities	G3.P1 Sport and Recreation Facility Planning • Regional Active Sport and Recreation Facility Planning Study	Current
	5. Partner to increase integrated community and education settings in the IMAP region		
	6. Improve the health, wellbeing and safety of the Inner Melbourne community	G3.P4 Consistent Approach in the Response to Homelessness • IMAP 2018 StreetCount	Completed

	Strategies	Project	Status
Goal: Neighbourhoods & Places	1. Plan and deliver an integrated open space network for Melbourne		
	2. Integrate water sensitive landscapes, tree canopies, biodiversity and habitat into design of parks and public spaces	G4.P1 Urban Forest and Biodiversity Strategy and Approach • IMAP Urban Forest Plan	Current
	3. Establish design standards to ensure new urban development protects and enhances amenity	G4.P2 Green Street Best Practice Guide	
	4. Ensure urban renewal contributes to distinctive high quality local neighbourhoods and positive development outcomes	G4.P4 Increasing Employment Opportunities • Urban Manufacturing: The Dilemma of Urban Employment Land	Completed
	5. Work to improve the design and management of significant public spaces and waterfront destinations	G4.P3 IMAP 3D Modelling Project	
Goal: Sustainability	1. Achieve a reduction in consumption of potable water per capita; an increase in alternative (non-potable) water sources; and a reduction in the amount of total nitrogen contributed to the waterways	G5.P3 IMAP Water Use Targets	
	2. Develop regional approaches to flood mitigation	G5.P2 Whole of Water Cycle Planning	
	3. Reduce total greenhouse gas emissions associated with Council's operations	G5.P4 IMAP Greenhouse Gas Emission Targets	
	4. Increase uptake of environmental sustainable design (ESD) outcomes	G5.P5 Implement ESD and Green Demonstration Projects • Sustainable Design Factsheets Project	Current
		• ARC Linkage Grant 'Mimicking natural ecosystems to improve green roof performance'	Completed
	5. Improve community and Council resilience to impacts of climate change	G5.P1 Whole of Waste Cycle Planning	





1

2

3

4

0 500m 1km 1.5km 2km

© June 2017 Cities of Melbourne, Port Phillip, Stonnington and Yarra. All rights reserved. No responsibility is accepted for errors or out of date information. Contact the IMAP Executive Officer for permission to reproduce the map in any form - telephone 03 9593 9300 for contact details. Map by visualise.com.au



Smartphone GPS enabled map
www.avenzamaps.com/maps/603278



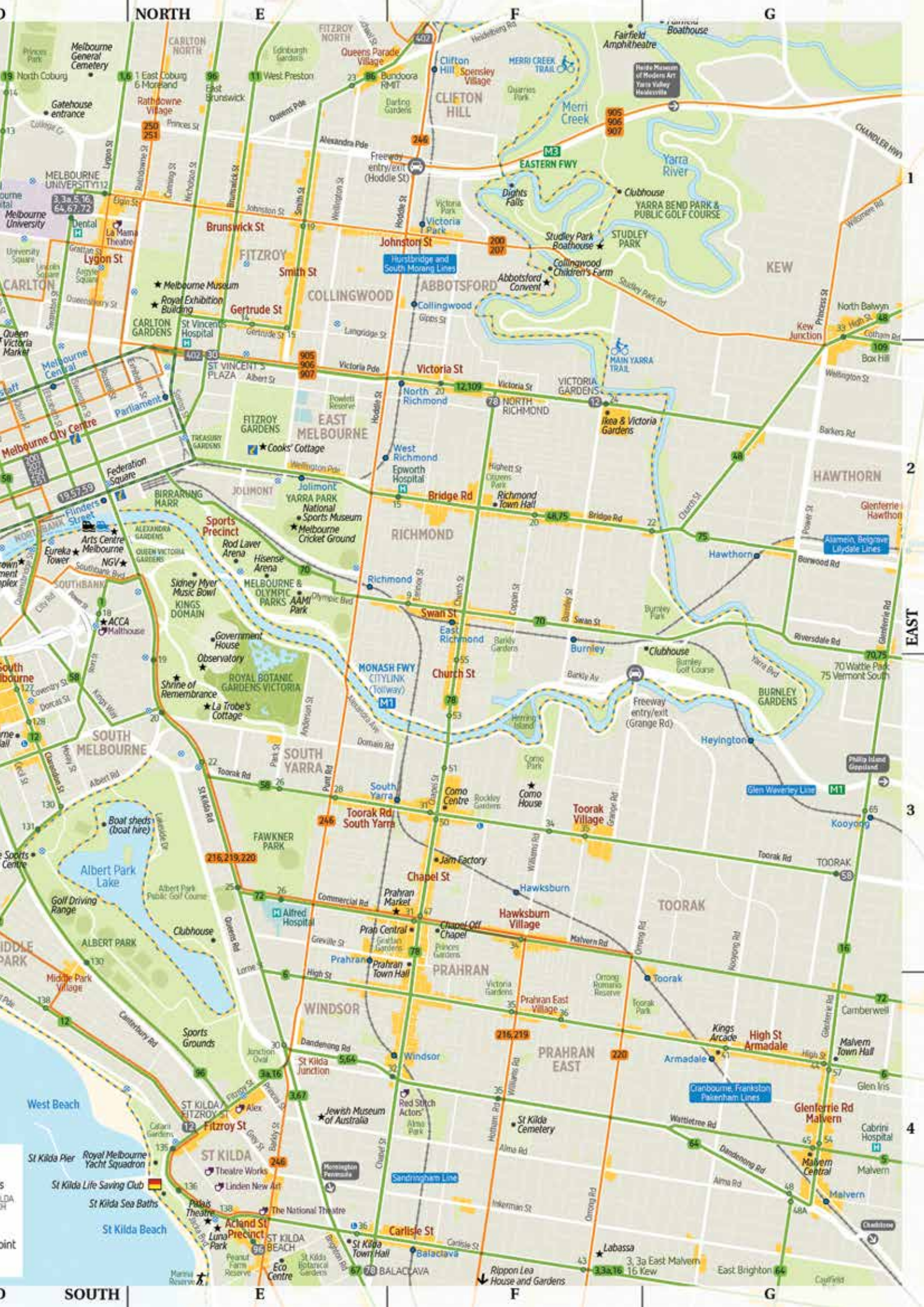
VicFreeWiFi
Free WiFi is available
in the Central City Area

Attractions & Amenities

- ★ Attractions
- Shopping/Dining area
- Visitor Centre
- Library

Transport

- Shared paths/trails
- Bike Share Station
- Train Station
- Flagstaff
- Bus Route Number
- Bus Terminus
- Tram Route Number
- Tram Stop
- Accessible Stop
- Tram Terminus
- Free City Circle Tram Route
- Ferry Service
- River Cruise Departure Point



Contact us

For further information please contact:

Elissa McElroy, IMAP Executive Officer

Officer Location – City of Stonnington
311 Glenferrie Road, Malvern Vic 3144
PO Box 58 Malvern Vic 3144

P 8290 1110

M 0404 248 450

E emcelroy@stonnington.vic.gov.au

Photos courtesy of the IMAP Councils
and University of Melbourne
Design by Johanna Villani Design

www.imap.vic.gov.au

Making Melbourne more liveable
INNER MELBOURNE ACTION PLAN

