

**IMAP Implementation Committee  
Business Arising  
28 February 2014**

A IMAP Implementation Committee (18 November 2011)				
	Responsibility	Action	Due	Progress
16 Action 5.2 Housing	IMAP Executive Officer and Action 5.2 project team	Action 5.2 Project team to: ▪ Brief City of Maribyrnong representatives	TBA	In Progress
B IMAP Implementation Committee (25 May 2012)				
	Responsibility	Action	Due	Progress
15 Action 6.3	IMAP Executive Officer	Arrange preparation of a submission to the Department of Justice on changes to the definitions; meeting with the Minister	July 2012	In Progress: met with VCGLR 3 May & 18 October 2012
C IMAP Implementation Committee (31 August 2012)				
	Responsibility	Action	Due	Progress
16 Other Bus	IMAP Executive Officer	Determine a process for the review of the Inner Melbourne Action Plan.	Ongoing	Current – Refer Item 17
D IMAP Implementation Committee (1 March 2013)				
	Responsibility	Action	Due	Progress
5 Bus Arising	IMAP Committee	IMAP members to consider the proposal to undertake a Capacity Audit of inner Melbourne's social and built infrastructure.	TBA	
E IMAP Implementation Committee (30 August 2013)				
	Responsibility	Action	Due	Progress
5. Comms & Governance	Executive Officer	Investigate amendments to the Operational Protocol (i.e. Section 11.1a. Unanimous votes and b. Majority votes) and Procurement Strategy (legislative changes) and arrange for final approval	Sept 2013	In Progress – being finalised
9. Progress Report	Executive Officer	Approach VicRoads to see if their network operating plans could be brought together for the IMAP Councils	Nov 2013	In progress
	CEO, CoPP	Ms Slatter to forward a copy of CoPP's work on the Port of Melbourne Capacity Project to other members.	TBA	
	CEO, CoY	CoY to circulate comments on their position on the East West link to other members	TBA	
	Action 3.5 Project Team	Action 3.5 Project team to consider the Port Of Melbourne Origin-Destination Study which is due for release	TBA	
10. Action 11 Map	Executive Officer	Follow up changes to the IMAP map MoU to include Maribyrnong City Council	Oct 2013	In Progress – seeking legal comment on changes
F IMAP Implementation Committee (29 November 2013)				
	Responsibility	Action	Due	Progress
6. Business Arising	Executive Officer	Executive Officer to pass on the IMAP Committee's acknowledgement to the City of Port Phillip's contribution towards the UWS partnership award.	TBA	On hold - Awaiting receipt of partnership award
11. Action 11 Tourism	IMAP Tourism group	IMAP Tourism group to consider use of the VicRoads Bike Share scheme data and promotion of the scheme.	Feb 2014	Completed
14 Three Year Implementation Plan	Executive Officer	Executive Officer to advise IMAP Councils of the budget requirements for next year.	Dec 2013	Completed

Correspondence

From	Regarding
3a Road Safety Action Group–Inner Melbourne (Email J Bolitho)	Annual report
3b University of Western Sydney (Email G Spivak)	CLT research Project Phase 2 Scope of work
3c Acting CEO VicRoads (to CEO City of Melbourne)	Inner Metro Municipal Forums & key issues arising.

**Recommendation:**

That the IMAP Implementation Committee resolves to **note** the actions undertaken in response to business arising from the previous minutes.

## Elissa McElroy

---

**From:** Janet Bolitho [janet.bolitho@gmail.com]  
**Sent:** Tuesday, 17 December 2013 1:21 PM  
**To:** Elissa McElroy  
**Subject:** Road Safety Action Group Inner Melbourne (RSAGIM) Annual Report  
**Attachments:** Annual Report 2013 final.pdf

Dear Elyssa

RSAGIM submits its Annual Report to IMAP for information.

RSAGIM is dedicated to the safety of vulnerable road users - pedestrians and cyclists - in Inner Melbourne. RSAGIM aims towards more coherent and consistent approaches to pedestrian and cyclist safety across the Inner Melbourne region.

The focus of our work in 2012/13 has been on researching 'car dooring' - the opening of car doors into the path of cyclists - to determine ways of addressing the problem.

We have also developed a prototype app that would assist people to navigate Inner Melbourne at night. It offers travel information, bar opening and closing times, and other useful information for the late night traveller.

I would love to catch up with you in the New Year to speak further about our mutual interests in a liveable Inner Melbourne.

Kind regards

Janet

--

Janet Bolitho

**Road Safety Action Group Inner Melbourne**

**P O Box 898**

**Port Melbourne**

**Vic 3207**

0434 575 171



# share & be aware

Report to the Annual General Meeting of the Road Safety Action Group Inner Melbourne

20 November 2013

## President's Report

Over the past year RSAGIM has continued its commitment to the safety of vulnerable road users.

The Victorian Road Safety Strategy and the road safety strategies of the City of Melbourne and Port Phillip released over the past year provide strong direction for the next 5 years.

### Advocacy

RSAGIM engaged Jonathan Daly (Mutfung) to prepare a submission based on RSAGIM's concerns to the Parliamentary Inquiry into Serious Injury. The submission focused on the impact of serious injury on vulnerable road users in Inner Melbourne. 816 pedestrians and cyclists were seriously injured between 2008 to 2012. RSAGIM called for better access to serious injury data and greater recognition of vulnerable road users in the Inquiry. RSAGIM also highlighted the interventions in favour of vulnerable road users in our member councils.

### Presentations

Wendy Taylor presented the findings of her many years of work on the Inner Melbourne Motorcycle Route Safety Review at the *Road Safety Research, Policing and Education* Conference in August.

On behalf of RSAGIM, I presented with Liz Ampt (Concepts of Change) at the *Bike Futures Conference* in October on the Bike Sticker Evaluation project. RSAGIM also presented a paper at the recent *Australasian College of Road Safety Conference* in Adelaide 'A multi-stage, multi-faceted approach to car dooring in Inner Melbourne'. The President of the ACRS in wrapping up that Conference made a call for better access to serious injury data to assist all those working in road safety - a call made by the RSAGIM in their presentation to the Parliamentary Inquiry.

RSAGIM congratulates Wendy on taking her longstanding interest in and commitment to road safety into formal studies this year.

Reports on our key programs are provided. RSAGIM's approach, of commissioning evidence based research to guide future action, was affirmed by stakeholders at our planning meeting in August.

In conclusion, in this year, RSAGIM has become even clearer on the validity of our purpose which is the safety of vulnerable road users in Inner Melbourne.

*The Road Safety Action Group Inner Melbourne will work towards a safer road environment for pedestrians, cyclists, motorcyclists and public transport users.*

*Road Safety Action Group will:*

- *Work collaboratively with organisations that support its purposes*
- *Work towards a coherent, coordinated approach to the safety of vulnerable road users in Inner Melbourne*
- *Work to overcome safety barriers to the take up of active transport given its benefits for social, environmental and health reasons*
- *Create a forum for debate, exchange, research and policy development, and for sharing ideas on local practices as they affect vulnerable road users*
- *Support communication and exchange between member councils, organisations and other tiers of government, in pursuit of its purposes;*
- *Advocate for a safe speed environment for vulnerable road users*
- *Actively promote respect among all road users.*

## Cycling Safety: Stage 2

**Stage 2 built on the findings and evidence of the Stage 1 report 'Bicycle Rider Collisions with Car Doors'.**

RSAGIM commissioned research **'to understand the efficacy of interventions to reduce 'car dooring''** and sought to understand

- the behaviour of drivers and passengers when opening car doors while parking
- internal triggers and prompts to make it easier to always check for cyclists
- the role of awareness stickers in changing behaviour, and
- to identify steps that could be taken by authorities

The research shows that there is still more work to be done. The phrase 'car dooring', while well understood by the road safety/cycling community, is not familiar to the broader community. Focus group participants did not know that it is an offence to open a car door into oncoming traffic. They were also unaware that there was a penalty associated with the offence.

However, once alerted to these facts, people were concerned about the extent of car dooring injuries. They felt that it was important to know about the fines, but that personal stories and understanding of the issue would be more persuasive in changing behaviour.

Respondents reported the stress of parking, when bikes are only one of many stimuli to be taken into account.

The report affirmed that stickers, distributed in isolation, are not effective and need to be combined with other road safety measures enforcement and engineering as well as broader awareness campaigns.

### New members

RSAGIM is pleased to welcome new members

Lisa Field, North West Metro Road Trauma Support Services Victoria

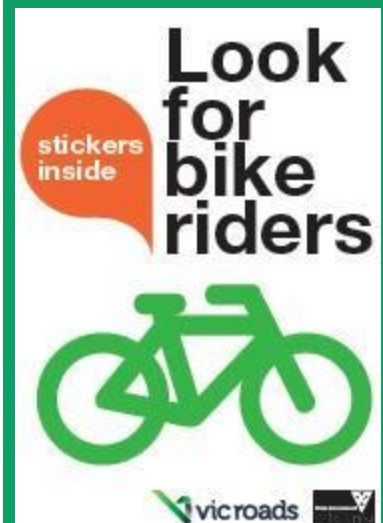
Kenn Beer, Safe System Solutions

## 'Car Dooring'

The unexpected opening of car doors into the path of cyclists

Road Rule 269 (3)

*A person must not cause a hazard to any person or vehicle by opening a door of a vehicle, leaving a door of a vehicle open, or getting off, or out of a vehicle*



## Pedestrian Safety: Stage 2

### Urban Navigator

RSAGIM is working with RMIT/OUTR to develop an app to support pedestrians to make their way around Inner Melbourne at night. The Urban Navigator aims to enable safer travel in the night environment through providing real time, relevant travel and other information in one very easy to use app. The first stage of the project was to develop a prototype app. The design and functionality of the app was tested with the steering committee and university students. The second stage of this project is well underway and will be completed in early 2014.

This project responds to VicRoads research on the vulnerability of pedestrians in the night environment.

RSAGIM believe that this is a very significant and important project. It is becoming plainer that the product which we are developing is perhaps in advance of the data available to support it.



## Motorcycling safety

The Inner Melbourne Motorcycle Route Safety Review, begun in 2006, continued in 2012/13, with a presentation on an evaluation of this work made to the Road Safety Research, Policing and Education Conference in August.

In 2013 an evaluation of the Route Safety Review was conducted. The evaluation reviewed the implementation of recommendations from audits conducted on the ten routes across Inner Melbourne with the highest motorcyclist casualty crashes in 2006. Among the hazards identified in the audits were: no lane delineation or faded line marking, poor/uneven pavement, crack sealing along centre of lanes, sunken and slippery pit lids in lanes, merging lanes with insufficient warning and oil build up on road surfaces near intersections.

The evaluation findings include:

- Vicroads implemented most of the recommended engineering controls noted in the audits
- a decrease in motorcyclist trauma on most of the routes in the audit, with collision crashes reduced from 73 to 29
- a reduction of "right through" (DCA 121) crashes from 15 to 3
- a reduction of "rear end" (DCA 130) crashes from 11 to 2

The findings will be shared more widely in 2014.

### General meetings in 2013

February	City of Melbourne	Sharing Yarra's Roads and Paths
May	City of Stonnington	Speed Limit Review
August	City of Port Phillip	Planning meeting with stakeholders
November	City of Yarra	Walking

The Executive met 7 times in 2013. The cycling and walking groups convened on an as needs basis

### Executive

Janet Bolitho (President), Wendy Taylor (Vice President), Gordon Walker (Treasurer), Jane Waldock (Secretary), Kerry Hylton, Neal Giles

## Highlights from RSAGIM member Councils

### CITY OF MELBOURNE

- Road Safety Strategy adopted in July
- Fully separated bike lanes on La Trobe St
- **Win Win:** Pedestrians and cyclists safer after introduction of on road bike lanes on Princes Bridge

### CITY OF YARRA

- 'Sharing Roads and Paths' booklet circulated to all households in Yarra
- **100% of local roads now 40 kph!**



### CITY OF PORT PHILLIP

- **A safer environment for all road users on Alma Road:** Following 10 casualty collisions on this road length between 2006 and 2010, the treatment involved the creation of a 1.7m painted pedestrian refuge with constructed traffic islands in the centre of the road reservation. In addition, 1.6m wide bike lanes were created in both directions.
- Adoption of Road User Safety Strategy

### CITY OF STONNINGTON

- Ongoing work to increase the number of local roads in Stonnington that have a 40 km/h speed limit



## Thank you

- An exceptionally hard working executive: Wendy Taylor, Gordon Walker, Kerry Hylton, Neal Giles and Jane Waldock
- Wendy Taylor for contributing to forums on motorcycling and broader road safety too numerous to mention
- Victoria Police, particularly Senior Sergeant Steve Wilson, for his commitment to road safety
- Emily Yuille, RSAGIM's key contact at VicRoads, for her unfailing and cheerful help
- The Victorian Community Road Safety Partnership for funding our key programs
- The City of Melbourne for hosting Executive meetings
- Our member councils: Melbourne, Port Phillip, Stonnington and Yarra for financial and officer support, access to meeting rooms and catering for general as well as working group meetings
- Members of the walking and cycling working groups including but not limited to Heidi Marfurt, Kate Sayeg, Maria Plakourakis and Tess Alloway
- Bicycle Network Victoria, Amy Gillett Foundation, Victoria Walks, and the Taxi Directorate
- Our contractors Rosalea Monacella and Brock Hogan (RMIT/OUTR), Pip Carrol (Squeaky Wheel), Liz Ampt (Concepts of Change), Jonathan Daly (Mufung), and Kate Kennedy (Trafficworks) for going above and beyond in fulfilling their contracts

## The year ahead

RSAGIM intends to

- continue to build on the work on 'car dooring' until that is no longer a cause of injury to cyclists
- increase its effort in walking  
Pedestrians should not be put at risk through adopting this most basic and healthy of pursuits
- bring the second stage of the Urban Navigator app to completion.
- support, promote and share our member Councils' leading work on the safety of vulnerable road users
- strengthen relationships with organisations working for the safety of vulnerable road users
- share the findings of the motorcycle safety route review
- speak up for vulnerable road users

RSAGIM supports the goal of the City of Melbourne Road Safety Plan to

*"Create a safe, comfortable and richly engaging urban environment where pedestrians, cyclists and motorcyclists are welcomed and supported through world leading road safety practices".*

## Contact Us

Road Safety Action Group Inner Melbourne

P O Box 898

Port Melbourne

Vic 3207

Inc A003428D

[admin@shareandbeaware.org.au](mailto:admin@shareandbeaware.org.au)

Visit us on the web at  
[www.shareandbeaware.org.au](http://www.shareandbeaware.org.au)



## **University of Western Sydney Community Land Trust Research Project Phase 2 Scope of Work**

This document provides the scope of works for *Community Land Trust Research Project Phase 2* (“the Project”).

### **1. Background**

In Phase 1 of this project, a research team led by Dr Louise Crabtree at the University of Western Sydney undertook research on community land trusts (CLTs) in the USA and UK and their implementation in Australia, leading to the release of the Australian CLT Manual in February 2013. The Manual can be accessed online at <http://bit.ly/13EX5fh> and includes:

- Overview of CLTs in the US and UK, their relevance and potential in Australia
- Getting started – rationale, objectives and activities
- Tax issues for organisations considering CLT housing
- Possible organisational structures, including their pros and cons
- Preliminary financial modeling at the household and organisational level
- Two possible legal mechanisms – long-term leaseholds and modified shared equity
- Model long-term lease, co-ownership deed and constitution

Phase 1 was funded by the Western Australian Housing Authority, the City of Port Phillip, the City of Sydney, Inner Melbourne Action Plan, St Kilda Community Housing and Mount Alexander Community Land Ltd.

Building on this and in response to ongoing sector requirements and interest, the team is now looking to undertake Phase 2 of the Community Land Trust Research Project. This Phase will involve two research tasks. The first will involve working with banks and other lending institutions to develop appropriate loan products for CLT residents. The second will involve working with organisations with a commitment to implementing CLT housing, to perform a series of in-depth case studies that will enable the creation of detailed financial modeling, refinement of the legal tools and identification of policy or regulatory issues.

The overall project’s primary aim is to undertake research on CLT options in the Australian context, to identify issues for developing CLTs and provide feasibility studies and models for



implementation. The project also focuses on making this material openly available to the emerging sector and on enabling governance of the work by partner organisations.

This Phase will focus on the development of appropriate financial products and provision of operational material from in-depth case studies.

## **2. Objectives**

Key research questions of this project relate to: the lending terms and requirements financial institutions will require, including insurance arrangements; the development of appropriate documents; and, how CLTs might tailor their programs and activities in differing contexts through the case studies.

## **3. Scope**

This Phase has two core tasks:

### **a) identify and research appropriate financial products for the establishment of CLTs in Australia**

The team will work with banks and other lending institutions to develop appropriate loan products for residents looking to buy a leasehold or shared equity interest in CLT housing. This will include identifying the criteria and conditions that would enable lending to households without exposing the household or the housing organisation to unacceptable risk.

This will include the possibility for the housing organisation to be notified upon arrears and default, and the possibility of fixed-rate loans. Insurance and guarantee issues will also be addressed. It is intended that the work will include the creation of an acceptable pro forma lending instrument.

### **b) perform in-depth case studies**

This task will involve the completion of up to four in-depth case studies in a range of locations and scenarios. These will involve financial modeling based on case studies' target communities and intended housing stock, as well as identification of the appropriate legal mechanism and governance concerns. Case study organisations must:

1. have a demonstrated commitment to starting a CLT;
2. seek or contribute their own legal advice for their own situation (see Note below); and,
3. contribute to funding the case study (commensurate with their level of financial resources).

\* **Note:** It is envisaged that UWS will coordinate work on revising the model lease and/or deed for the case studies on the basis of the case studies' local conditions, objectives and activities. It is anticipated that unless otherwise specified, case study organisations will either seek local legal expertise or contribute internal legal expertise to organisational legal

matters. Such organisational matters might include examination and possible revision of the organisation's existing constitution or equivalent other document, modification of the model constitution, implications in light of the organisation's existing funding and regulatory situation, and other similar issues.

#### **4. Resources**

The Project will involve:

- Contributions from partners for information supply and meeting participation, in kind. As per the above Note, case study partners will seek or contribute their own legal advice for organisational implementation issues unless otherwise specified.
- Data, staff input and compilation of deliverables by research staff (see over) and/or contractors.
- End of project public forum/s.

The total funding for the project is \$25,000 (ex-GST) for task a) and up to \$15,000 per case study for task b). Case studies will be costed according to location as team travel expenses are a core budget component in the case studies. A range of potential funding partners will be approached to secure the required total funding.

#### **5. Project governance**

Phase 1 of the project was governed by a Steering Committee comprised of representatives from the funding partners. It is proposed that the funding partners form a Steering Committee to govern Phase 2 if they wish to participate. As per Phase 1, the research team will be members of the Steering Committee. Phase 1 Steering Committee members are also able to join the Phase 2 Committee. Steering Committee membership is not compulsory.

The Steering Committee would meet at the project inception and to review the draft outputs from the project. The main Steering Committee meetings would be hosted by the project partners with members able to either travel or attend via teleconference. Note that partner travel to these meetings will not form part of the project funding.

#### **6. The research team**

The full time staff that would work on the project include:

Dr Louise Crabtree (University of Western Sydney)  
Professor Peter Phibbs (University of Sydney)  
Professor Carolyn Sappideen (University of Western Sydney)  
Dr Hazel Blunden (University of Western Sydney)

Short CVs are attached.

## CURRICULUM VITAE DOCTOR LOUISE CRABTREE

BSc (Hons 1, Macquarie), PhD (Macquarie)

Louise Crabtree is a human geographer and urban ecologist with experience in investigating models of community-based housing that aim to combine affordability and sustainability. She has undertaken desk- and field-based research into numerous different models of innovative housing. In 2009 she organised and hosted an Australian visit by Dr John E Davis, leading community land trust researcher and was awarded a bursary from the United Nations to visit Champlain Housing Trust, the largest CLT in the USA.

Louise's work on CLTs is driving the development of a CLT sector in Australia, particularly through her co-ordination and lead authorship on the inaugural Australian CLT Manual. She has advised and presented to forming CLTs in Victoria and New South Wales and has had discussions about the model with various Indigenous leaders. Louise has also authored an invited chapter on the potential of CLTs in Australia for the recently launched global CLT reader.

### Selected publications

**Crabtree L**, Blunden H, Phibbs P, Sappideen S, Mortimer D, Smith A and Chung L (2013) *The Australian Community Land Trust Manual*. University of Western Sydney, Sydney, 354 pages.

**Crabtree L** (2013) 'Decolonising property: exploring property, time and ethics through contemporary housing in Australia', *Environment and Planning D: Society and Space*, 31(1), 99-115.

**Crabtree L**, Blunden H, Milligan V, Phibbs P and Sappideen C (2012) *Community Land Trusts and Indigenous Housing Options*. Final Report no. 185. Australian Housing and Urban Research Institute, Melbourne.

**Crabtree L**, Phibbs P, Milligan V and Blunden H (2012) *Principles and Practices of an Affordable Housing Community Land Trust Model*. Research Report, Australian Housing and Urban Research Institute, Melbourne.

**Crabtree L** (2010) 'CLT applications in Australia', in Davis J (ed.) *Common Ground: the Community Land Trust Reader*. Cambridge, MA: the Lincoln Institute of Land Policy, 464-474.

**Crabtree L** (2010) Housing as a social-ecological system: resilience, adaptive capacity and governance considerations. *Australasian Housing Researchers' Conference and Asia Pacific Network of Housing Research Conference*, Sydney, 5-7 August.

**Crabtree L** (2009) Sub/urban dream(ing): land speculation and the quarter acre block, in de Souza K and Begg Z (eds) *There Goes the Neighbourhood: Redfern and the Politics of Urban Space*. Sydney: You Are Here, 102-105.

**Crabtree L** and Hes D (2009) Sustainability uptake in housing in metropolitan Australia: an institutional problem, not a technological one. *Housing Studies*, 24(2), 203-224.

Emsley S, **Crabtree L** and Phibbs P (2008) *Models of Sustainable and Affordable Housing for Local Government: Project Report*, Report for Parramatta City Council, Urban Research Centre, UWS.

**Crabtree L** (2008) *Models of Perpetually Affordable Homeownership: Report and Case Studies from the United States of America*. Report requested by the Senate Select Committee on Housing Affordability, June 2008.

## CURRICULUM VITAE PROFESSOR PETER PHIBBS

BA (Hons) UNSW, MSc, UNSW, PhD (Econ Geog UNSW)

Peter Phibbs is a geographer, planner and social economist with extensive experience in program evaluation, financial analysis and cost benefit analysis. He has undertaken economic and financial appraisals of a diverse range of projects including numerous housing programs and projects.

Peter has over twenty years experience undertaking housing research and is a co-author of *The Australian Community Land Trust Manual*. Studies which he has led or contributed to include an evaluation framework for affordable housing as part of AHURI NRV3, an assessment of affordable housing models operating throughout Australia, an extensive study of housing assistance and non-shelter outcomes, an analysis of housing and labour market relationships and consideration of regulatory models suitable for the community housing sector.

### Selected reports and publications

Crabtree L, Blunden H, **Phibbs P**, Sappideen S, Mortimer D, Smith A and Chung L (2013) *The Australian Community Land Trust Manual*. University of Western Sydney, Sydney, 354 pages.

Crabtree L, Blunden H, Milligan V, **Phibbs P** and Sappideen C (2012) *Community Land Trusts and Indigenous Housing Options*. Final Report no. 185. Australian Housing and Urban Research Institute, Melbourne.

Crabtree L, **Phibbs P**, Milligan V and Blunden H (2012) *Principles and Practices of an Affordable Housing Community Land Trust Model*. Research Report, Australian Housing and Urban Research Institute, Melbourne.

Milligan V, Gurran N, Lawson J, **Phibbs P** and Phillips R (2009) *Innovation in affordable housing in Australia: Bringing policy and practice for not-for-profit housing organisations together*, Final Report, AHURI, Melbourne

Emsley S, Crabtree L and **Phibbs P** (2008) *Models of Sustainable and Affordable Housing for Local Government: Project Report*, Report for Parramatta City Council, Urban Research Centre, UWS.

Milligan V., **Phibbs P.**, Fagan K. and Gurran N. (2007) *Approaches to Evaluation of Affordable Housing Initiatives in Australia*. Final Report. AHURI Melbourne.

**Phibbs, P.** & Young, P. (2005) *Housing Assistance and Non-Shelter Outcomes*. Final Report, Australian Housing and Urban Research Institute (AHURI), Melbourne.

Milligan V., **Phibbs P.**, Fagan K. and Gurran N. (2004) *A Practical Framework for Expanding Affordable Housing Services in Australia: Learning from Experience*. Final Report. AHURI Melbourne.

Barbato, C., Clough, R., Farrar, A. & **Phibbs, P** (2004) *Stakeholder requirements for enabling regulatory arrangements for community housing in Australia*. Final Report AHURI, Melbourne.

Barbato, C., Farrar, A. & **Phibbs, P.** (2003) *How does community housing help strengthen communities?* Final Report AHURI, Melbourne.

Hall, J., Berry, M. & **Phibbs, P.** (2003) Policy options for stimulating private sector involvement in affordable housing across Australia: Operationalising and implementing viable new options (Stage five). AHURI, Melbourne.

## **CURRICULUM VITAE CAROLYN SAPPIDEEN**

LLB (Melb) LLM (Hons) Syd

Carolyn Sappideen is Professor of Law, School of Law, University of Western Sydney and a co-author of *The Australian Community Land Trust Manual*. She has taught real property law at the Universities of Sydney and Queensland, Faculties of Law for over 25 years. She researches and writes on Torts law, Medical Law, Employment law and Elder Law. She has received a research grants in relation to Elder Law and Electricity Law. Publications in the area of property law include:

### Selected Publications

Crabtree L, Blunden H, Phibbs P, **Sappideen C**, Mortimer D, Smith A and Chung L (2013) *The Australian Community Land Trust Manual*. University of Western Sydney, Sydney, 354 pages.

Crabtree L, Blunden H, Milligan V, Phibbs P and **Sappideen C** (2012) *Community Land Trusts and Indigenous Housing Options*. Final Report no. 185. Australian Housing and Urban Research Institute, Melbourne.

**Sappideen C** and Butt P (1986) *The Perpetuities Act 1984*. Sydney: the Law Book Company.

**Sappideen C**, Stein R, Butt P and Certoma G (1980) *Cases and Materials on Real Property*. Sydney: the Law Book Company (1<sup>st</sup> edn; revised 2<sup>nd</sup> edition 1985, revised 3<sup>rd</sup> edition 1989).

**Sappideen C** and Butt P (1979) 'Rendering the rule against perpetuities less remote', *Sydney University Law Review*, 8, 620-656.

**Sappideen C** (1979) 'Life after death – sperm banks, wills and perpetuities', *Australian Law Journal*, 53, 311-319.

**Sappideen C** (1986) 'Perpetuities – age reduction and the application of the eighty year period – some unexpected problems', *Australian Law Journal*, 60, 471-475.

**Sappideen C** (1985) 'Perpetuities Act 1984 (N.S.W.) – transitional problems', *Australian Law Journal*, 59, 628-630.

### Law Reform

Report on Conveyancing (Presumptions of Parenthood) Amendment Bill 1983 for the New South Wales Law Reform Commission, May 1983.

Acted as advisor to the A.C.T. and the Northern Territory Attorney General's Department on Perpetuities legislation for A.C.T.

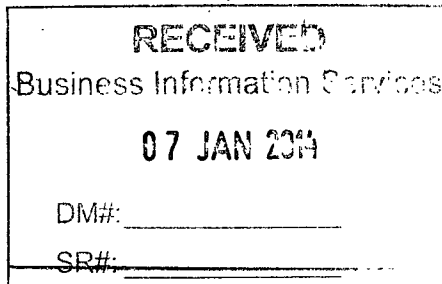
Member Queensland Law Society Conveyancing Committee on Land Titles Act

Office of the Chief Executive  
60 Denmark Street  
Kew Victoria 3101

Telephone (03) 9854 2029  
Fax (03) 9853 0512

[vicroads.vic.gov.au](http://vicroads.vic.gov.au)

Please Quote: VMBN004391  
Ref: BN005070



Ms Kathy Alexander  
Chief Executive Officer  
Melbourne City Council  
GPO Box 1603  
**MELBOURNE VICTORIA 3001**

Document Barcode



Dear Ms Alexander

#### **INNER METROPOLITAN MUNICIPAL FORUM 2013 – KEY ISSUES ARISING**

I am writing to thank you for Melbourne City Council's hosting and contribution to the Inner Metropolitan Municipal Forum, held on 2 December 2013, with VicRoads and Public Transport Victoria (PTV).

Similarly, I will be extending my thanks to the Inner Metropolitan group of Councils that attended, which include the Cities of Moonee Valley, Port Phillip and Yarra.

I found our conversation most engaging, and appreciated the opportunity for us to explore together ways to more strategically position inner Melbourne for future growth and changes, recognising the important relationship between land use development, employment and movement of goods.

I note the key challenges identified in the inner Metropolitan municipalities include managing network demands and improving public transport, improving transport connections, managing the growing needs of cycling, residential and population growth, expansion of the central city, parking provisions in new precincts, and employment. I also congratulate the collective effort of the Councils through the Inner Melbourne Action Plan (IMAP) cooperative and its ongoing initiatives. I also note that IMAP has completed a through traffic study and our agreement that VicRoads will work with the IMAP Councils regarding the application and update of the data from the study.

It is pleasing to note that through our close working relationship, our respective organisations remain largely aligned in the key objectives and solutions for inner Melbourne. It was of great benefit to discuss the status for each of the following transport priority items:



- The East-West Link project and its relationship to congestion and public transport improvements;
- VicRoads' SmartRoads tool and its relationship with through and local traffic movements;
- VicRoads' commitment to planning for key transport corridors, such as Hoddle Street, Chandler Highway, City Road, and roads within Fisherman's Bend;
- PTV's commitment to planning for improvements across the public transport network, including new areas such as Fisherman's Bend;
- The desire by Councils to extend 40 km/h speed zones in the context of the *Victorian Speed Limit Review* and the recent speed limit guidelines changes;
- The ongoing challenge for funding of future infrastructure; and
- Ongoing bicycle planning and improvements.

As discussed at the meeting, VicRoads will work together with Public Transport Victoria, Places Victoria, the newly formed Metropolitan Planning Authority and Councils with a view to achieve a more coordinated approach in transport and planning.

The following key challenges for the Region were also raised and discussed during the meeting:

- Road Safety and VicRoads' commitment to lead the development of a Metropolitan North West *Road Safety Strategy*, through its Regional Management Forum partnership;
- the status and ongoing operation of the Melbourne Bike Share (MBS) scheme;
- the benefits of Managed Motorways on Melbourne's freeway network; and
- the release and ongoing improvements to VicRoads' *VicTraffic* Smartphone App.

VicRoads and PTV also agreed to pursue the following items following the meeting:

- Following its organisational restructure, VicRoads to provide copies of its new organisational structure, which is attached to this letter;
- VicRoads intends to engage Councils soon to further develop VicRoads' draft policy on Boulevard treatments.
- Through its *Destination Melbourne* group, the City of Melbourne will invite PTV to discuss and share ideas and innovations for public transport.
- Early involvement and consultation to occur with Councils on bicycle and pedestrian planning and improvements.

I look forward to ongoing dialogue with you on these matters. VicRoads' Metropolitan North West Region will continue to work closely with your staff into the future.

Should you have any improvements or suggested changes to the meeting and its format, I invite you to pass them on to Ms Patricia Liew, VicRoads' Regional Director, Metropolitan North West Region (Tel: 9313 1111).

I look forward to our next meeting in 2014.

Yours sincerely

A handwritten signature in black ink, appearing to read 'Peter Todd', written over the printed name.

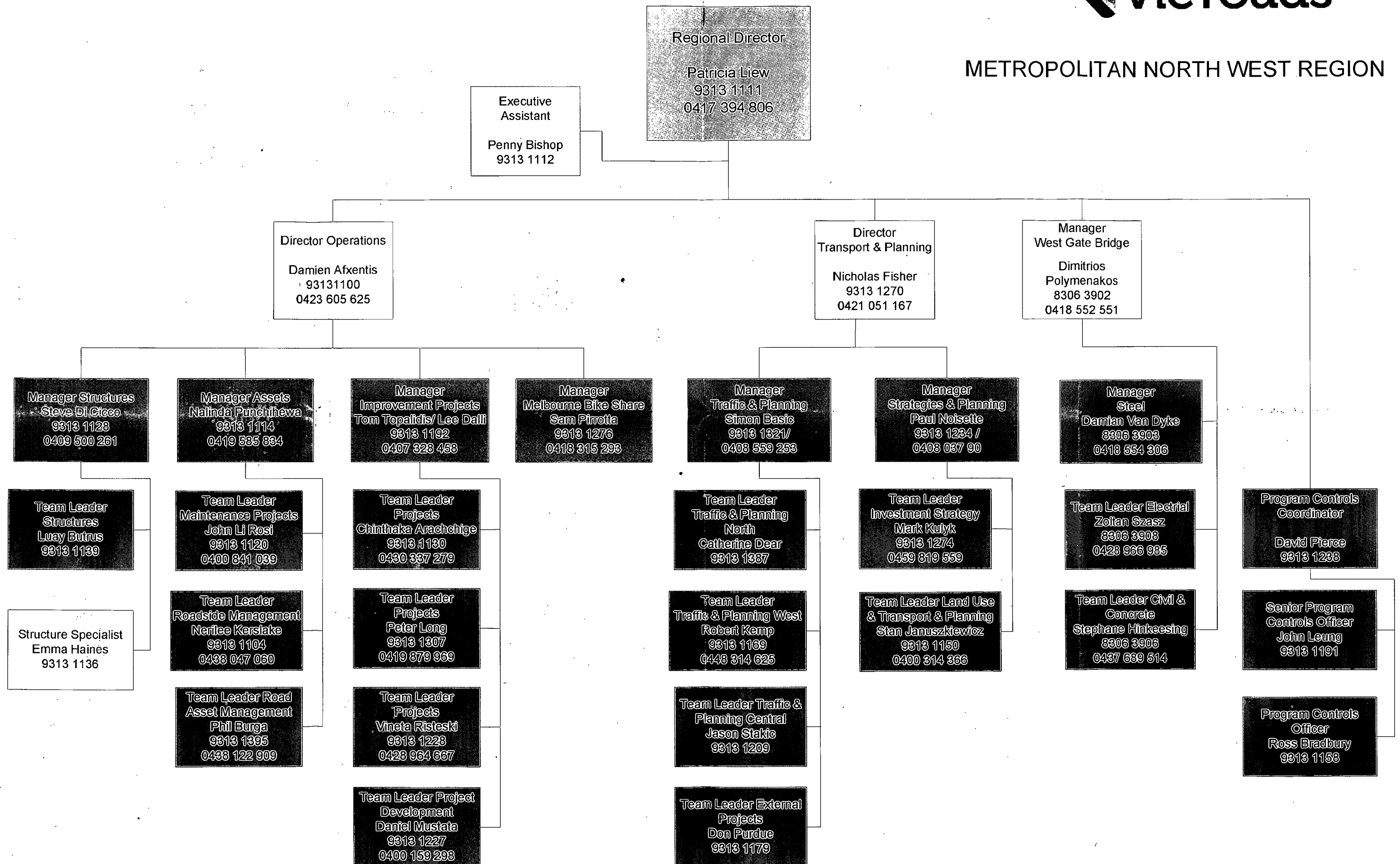
**PETER TODD**  
**ACTING CHIEF EXECUTIVE**

**2 / 1 /2014**

**ENCL.**

*cc: Ray Kinnear, Director of Network Planning*

# METROPOLITAN NORTH WEST REGION



# VicRoads Organisation Structure

